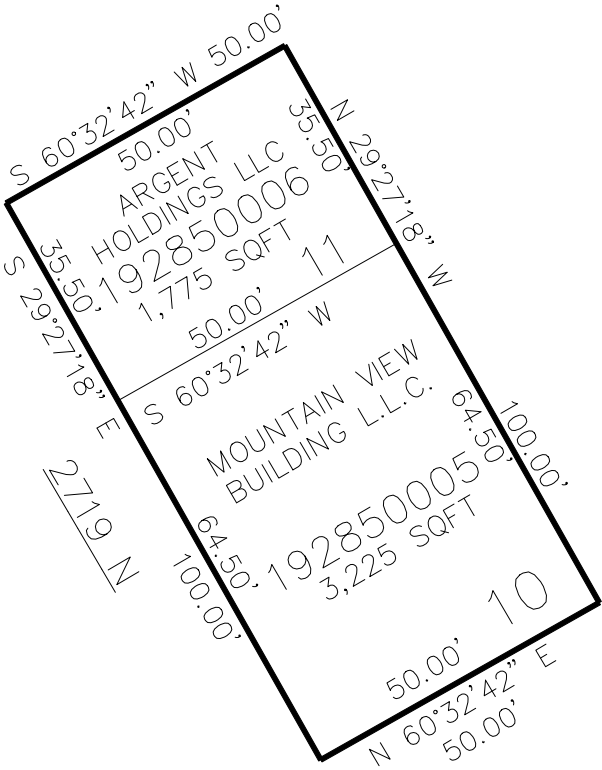


PART OF THE SE.1/4, OF SECTION 25, T.7N., R.2W., S.L.B. & M.
MOUNTAIN VIEW LANDING COMMERCIAL CENTER
UNITS 4,5,6,10&11 – 1ST AMENDMENT

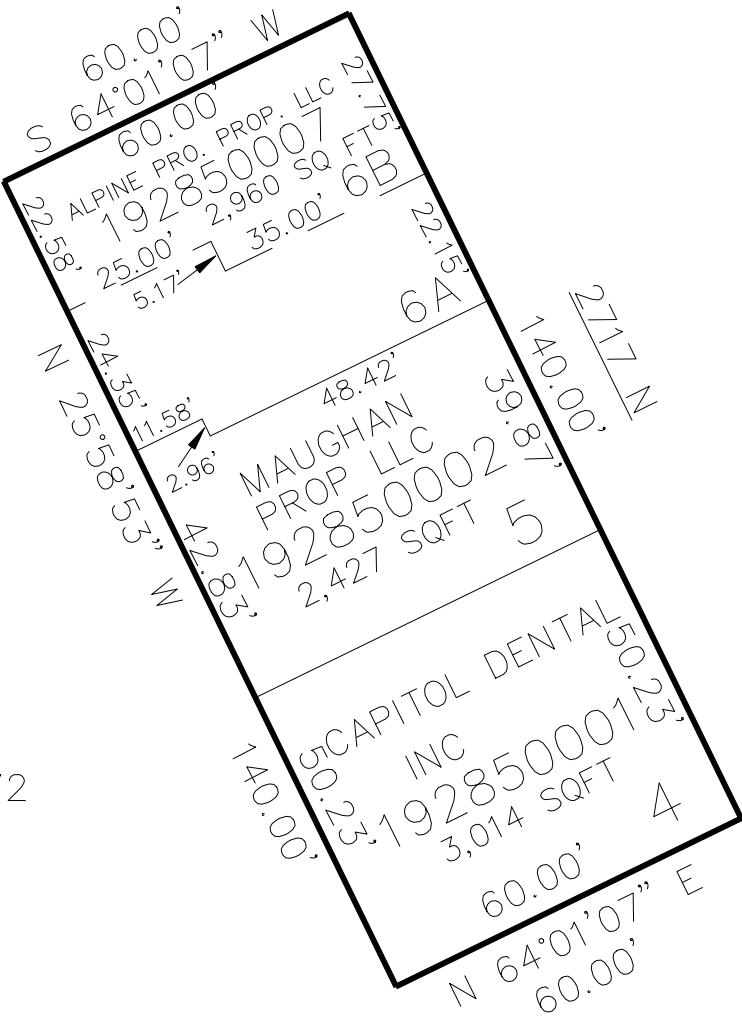
TAXING UNIT: 449

IN PLEASANT VIEW CITY
SCALE 1" = 30'

SEE PAGE 272



SEE PAGE 272



SEE PAGE 272

10' UTILITY & DRAINAGE EASEMENTS EACH
SIDE OF PROPERTY LINES AS INDICATED
BY DASHED LINES EXCEPT AS OTHERWISE
SHOWN.

FOR COMPLETE ENG DATA SEE
ORIGINAL DEDICATION PLAT IN
BOOK 70, PAGE 51 OF RECORDS.